

Moving ABELDent SQL to a new Server

LOG IN AS "ADMINISTRATOR" FOR TASKS BELOW, NOT AN ACCOUNT WITH ADMIN PRIVILEGES

- 1) From **OLD SERVER** Run "**SQL Server Maintenance Plan**". (Desktop/ABELDent Administration) Which will create **.bak** (latest backup) from SQL database. Store somewhere on **NEW SERVER**
- 2) Install **SQL** on the "**New Server**" (Refer to "**Installing SQL Server Manually.PDF**")
- 3) Install **ABELDent DCS**, it installs a blank **ABEL** in the SQL Database. (NO Data present)
- 4) From **OLD SERVER**: Copy over the **ABELDent** folder on to **NEW SERVER**.
- 5) Restore Databases in SQL server from the latest **.bak** files which should be created in **STEP 1**.

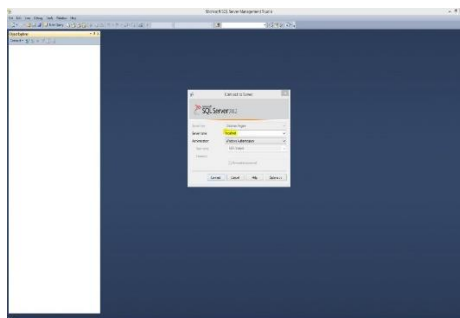
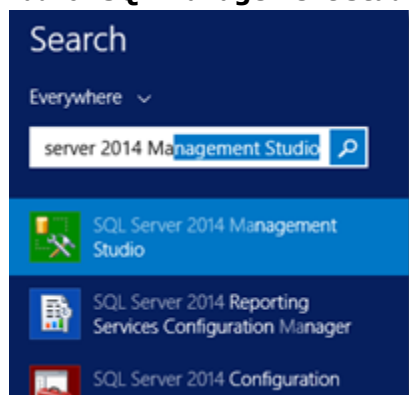
NOTE: Follow the steps below to restore the SQL database from **.bak** files

Current ABELDent revisions use a single database called **ABEL**.

Earlier versions will have **6** Databases, in that case **restore all 6 stated below**.

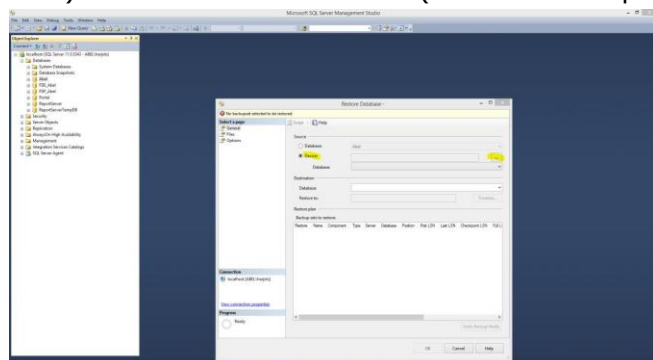
-Abel, Abelsecurity, Chart, Clinical, ClinicalForms, Portal

- i) Launch **SQL Management Studio** from windows program menu.



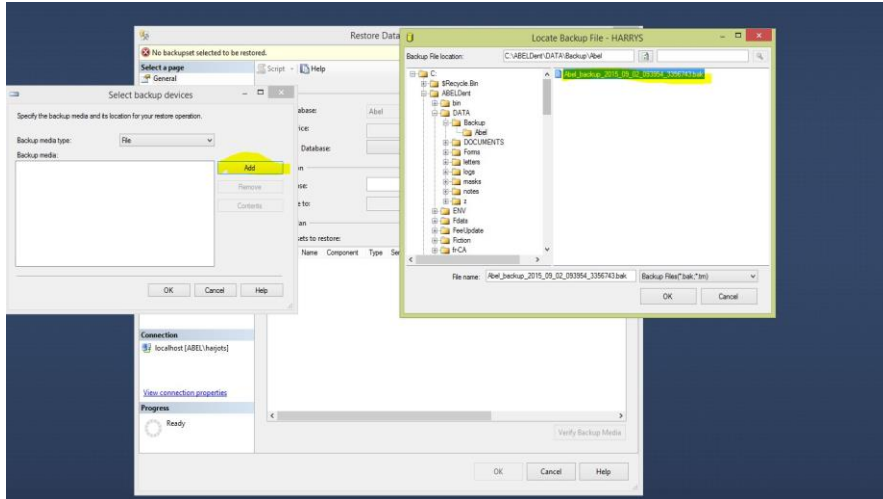
- ii) Expand databases and right click on the 'Abel' database -> Click on Tasks -> Restore -> Database

- iii) Click on Device and ... (three dots or ellipsis) on the right

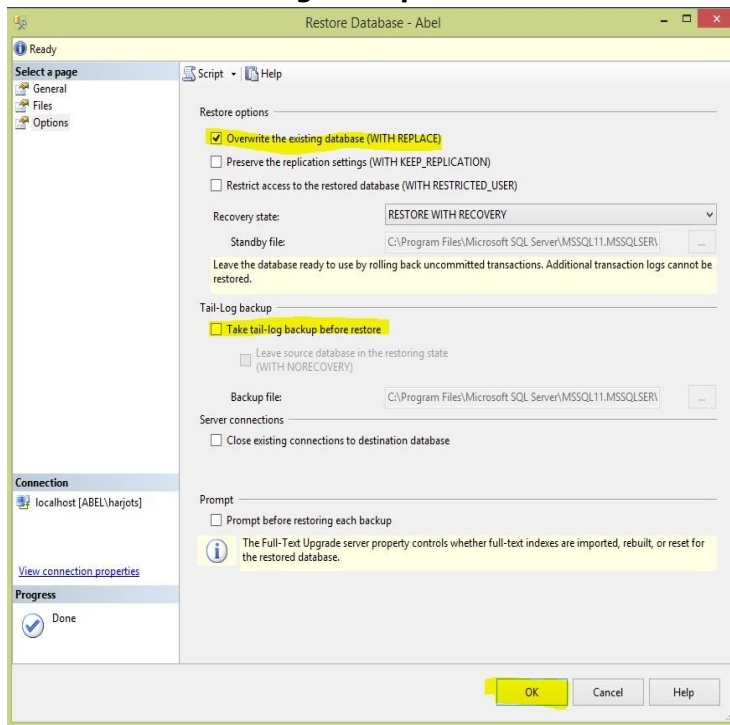


Moving ABELDent SQL to a new Server

- iv) Click on Add and navigate to your recent database backup in Abeldent\Data\Backup\Abel



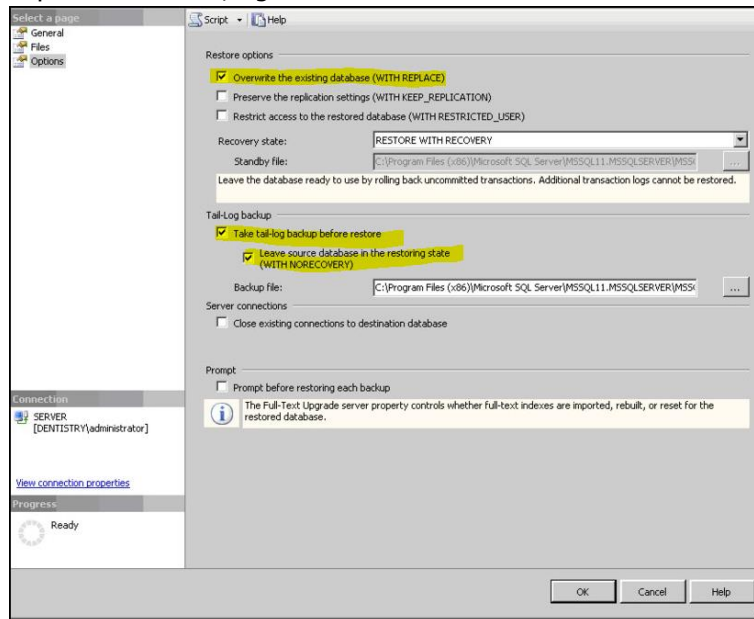
- v) Click on Options and Check the box for '**Overwrite the Existing Database**' and uncheck the '**Take tail-log backup before restore**'. Click on ok



Moving ABELDent SQL to a new Server

VI) If you need to restore **Transaction Logs** then follow these steps.

Expand databases; right click on the 'Abel' database -> Click on Tasks -> Restore -> Transaction Log



- 6) Open the **ABELDent** program to validate the Data looks correct
- 7) Setup **Maintenance Plans** follow "**Creating Maintenance Plans in SQL SERVER**"
- 8) Reinstall client machines select client **radio button** and indicating new **SERVER NAME**.
- 9) If office uses **Itrans** reinstall using "**How to Install Itrans**"
Once installed - Contact Itrans and install a new **Digital Certificates**, then reboot the server.
- 10) Call ABELDent support to **re-license** SERVER permanent license @ **1-800-263-5104** ext. **2**

IF SQL HAS ISSUES with AUTOINSTALL and says "**SQL is already installed**", do not delete anything.
Just follow "**Installing SQL Server Manually**" document.

IMPORTANT

It is critical to review your backup process when making changes to your server. If you have replaced or updated your server, moved ABELDent to a new drive, or made any changes to existing data location please ensure your backup is updated to reflect the new location or changes.

If you subscribe to ABELDent RBS Remote Backup Service please email us at: RBS@ABELSoft.com or call us at: 800-267-ABEL (2235) ext 7 for RBS support. We will ensure your backups are modified to reflect the new location.